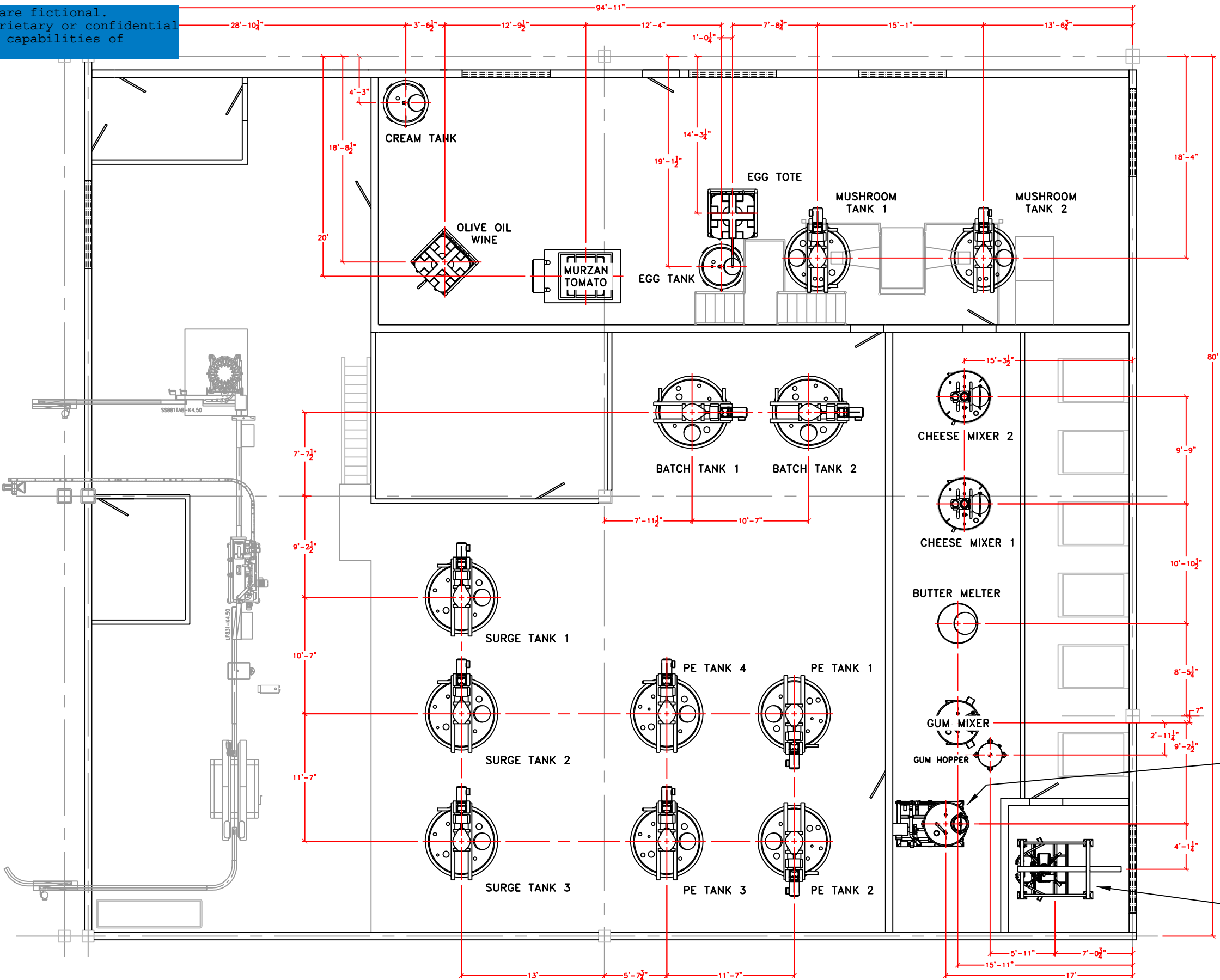
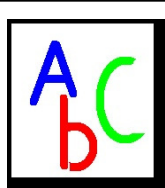


ABC Foods and project ACORN are fictional.
These documents are not proprietary or confidential
and are released to show the capabilities of
Cook Process Solutions LLC.

PLANT NORTH



	<div><div></div><div>E</div></div>			<input checked="" type="checkbox"/> RELEASED FOR REVIEW	
	<div><div></div><div>D</div></div>			<input type="checkbox"/> FOR CONSTRUCTION BY:	
30AUG2011	<div><div></div><div>C</div></div>	GENERAL REVISION	AAS		
15JUN2011	<div><div></div><div>B</div></div>	CONVEYOR INLET AND OUTLET FEED	AAS		
12MAY2011	<div><div></div><div>A</div></div>	MUSHROOM AND EGG TANK LAYOUT; DOORS, WALLS, AND FILLER AREA	AAS		
DATE	#	REVISION	BY	<input type="checkbox"/> AS BUILT	

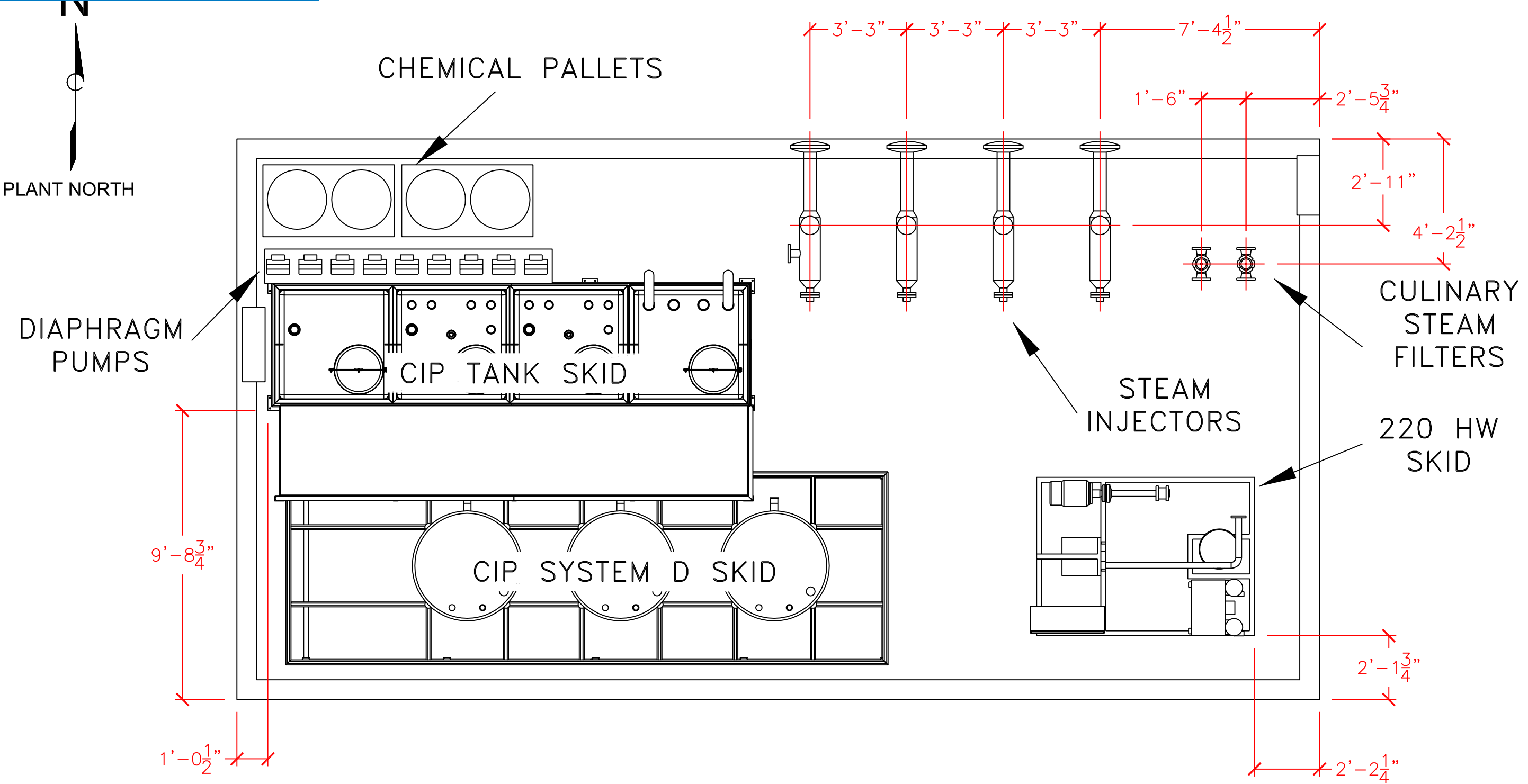


ABC FOODS		
SPRINGFIELD, MO		
WHITE SAUCE KITCHEN		
10MAY2011	STASSEL	11x17

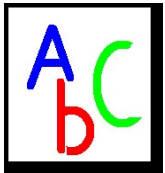
EQUIPMENT LAYOUT	
DRAWING NUMBER	REV
LAY-200-04	C



ABC Foods and project ACORN are fictional.
These documents are not proprietary or confidential
and are released to show the capabilities of
Cook Process Solutions LLC.



	<div>△E</div>			<input checked="" type="checkbox"/> RELEASED FOR REVIEW	
	<div>△D</div>			<input type="checkbox"/> FOR CONSTRUCTION BY:	
	<div>△C</div>				
30AUG2011	<div>△B</div>	GENERAL REVISION	AAS	OWNER	DATE
5MAY2011	<div>△A</div>	UPDATE NEW CIP AND WATER TANKS	SLC		
DATE	#	REVISION	BY	<input type="checkbox"/> AS BUILT	

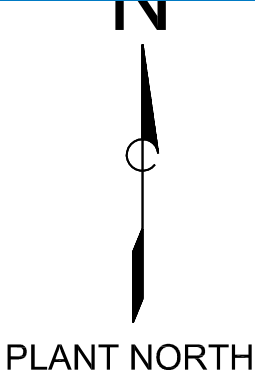


ABC FOODS		
SPRINGFIELD, MO		
WHITE SAUCE KITCHEN		
23MAR2011	STASSEL	11x17

CIP AREA EQUIPMENT LAYOUT		REV
DRAWING NUMBER		
LAY-200-04B		B

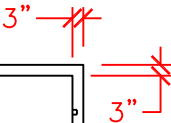
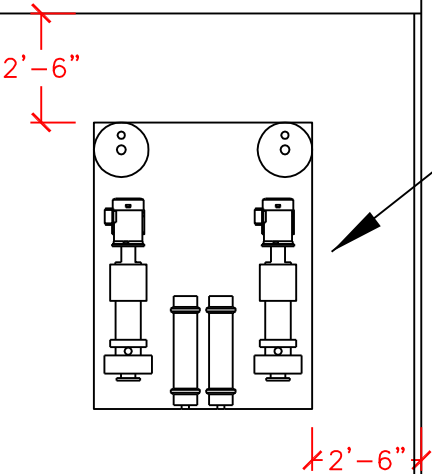


ABC Foods and project ACORN are fictional.
These documents are not proprietary or confidential
and are released to show the capabilities of
Cook Process Solutions LLC.



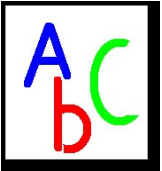
CHILLER SKID ON
RAISED PAD

VACUUM
SKID



UTILITY AREA
LOCATED NORTH OF OLD
KITCHEN 5

				<input checked="" type="checkbox"/> RELEASED FOR REVIEW
				<input type="checkbox"/> FOR CONSTRUCTION BY:
DATE	#	REVISION	BY	<input type="checkbox"/> AS BUILT



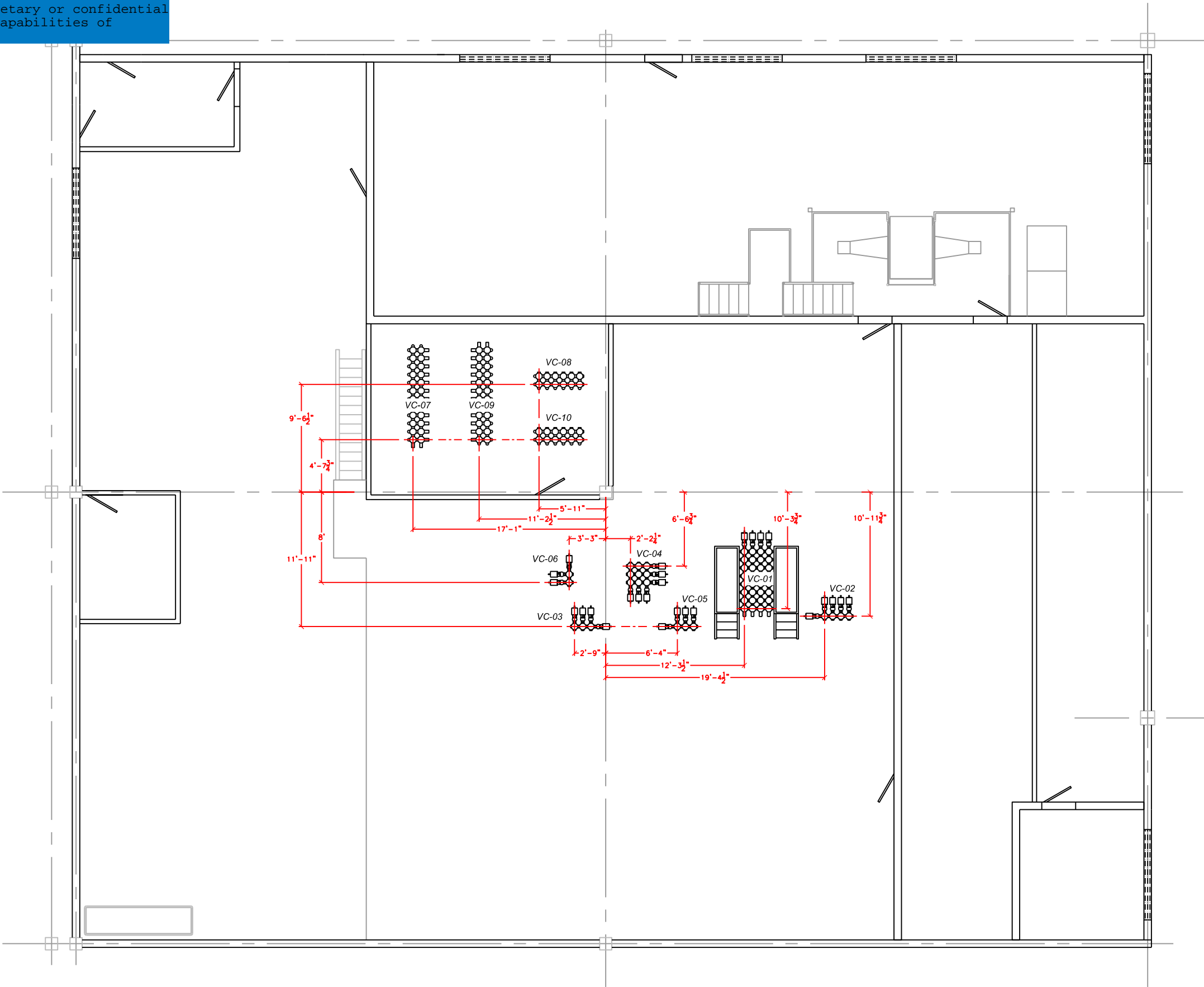
ABC FOODS		
SPRINGFIELD, MO		
WHITE SAUCE KITCHEN		
2SEP2011	STASSEL	11x17

UTILITY AREA NEW EQUIPMENT LAYOUT	
DRAWING NUMBER	REV
LAY-200-15	

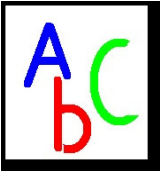


ABC Foods and project ACORN are fictional.
These documents are not proprietary or confidential
and are released to show the capabilities of
Cook Process Solutions LLC.

PLANT NORTH



	<div><div>E</div><div>D</div><div>C</div><div>B</div><div>A</div></div>			<input checked="" type="checkbox"/> RELEASED FOR REVIEW
				<input type="checkbox"/> FOR CONSTRUCTION BY:
			OWNER	DATE
DATE	#	REVISION	BY	<input type="checkbox"/> AS BUILT





ABC FOODS		
SPRINGFIELD, MO		
WHITE SAUCE KITCHEN		
2SEP2011	STASSEL	11x17

VALVE CLUSTER LAYOUT	
DRAWING NUMBER	REV
LAY-200-16	



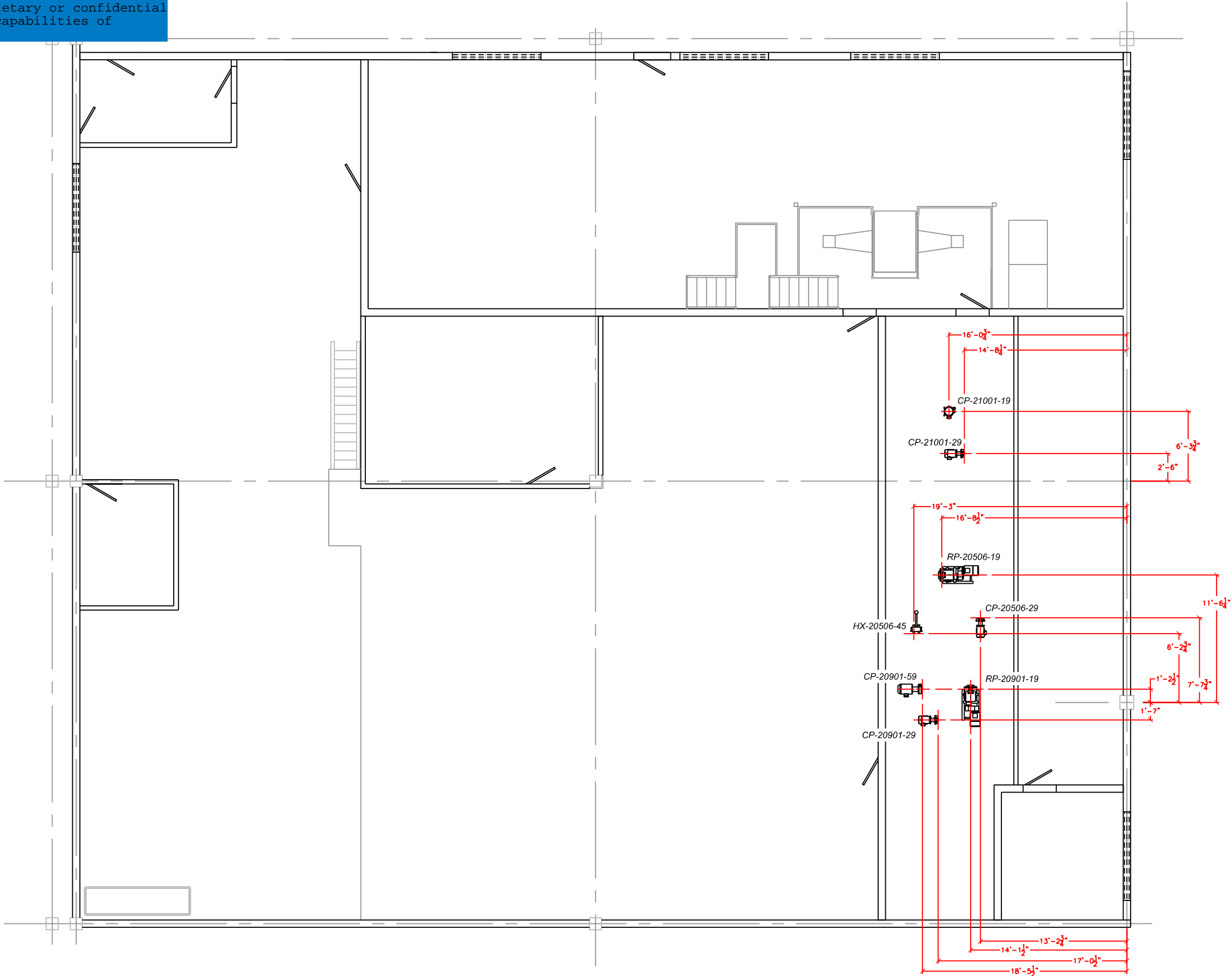
PLANT NORTH



	<div>E</div>			<input type="checkbox"/> RELEASED FOR REVIEW			ABC FOODS			PROCESS AREA PUMP LAYOUT		
	<div>D</div>			<input type="checkbox"/> FOR CONSTRUCTION BY:			SPRINGFIELD, MO					
	<div>C</div>						WHITE SAUCE KITCHEN			DRAWING NUMBER	REV	
	<div>B</div>			OWNER _____ DATE _____						LAY-200-17		
DATE	#	REVISION	BY	<input type="checkbox"/> AS BUILT			2SEP2011 STASSEL 11x17					

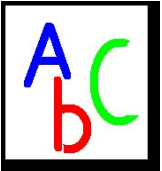
ABC Foods and project ACORN are fictional.
These documents are not proprietary or confidential
and are released to show the capabilities of
Cook Process Solutions LLC.

PLANT NORTH



DIMENSIONS FROM INLET
PORT OF PUMPS

	<div>△ E</div>			<input checked="" type="checkbox"/> RELEASED FOR REVIEW
	<div>△ D</div>			<input type="checkbox"/> FOR CONSTRUCTION BY:
	<div>△ C</div>			
	<div>△ B</div>			
	<div>△ A</div>			
DATE	#	REVISION	BY	<input type="checkbox"/> AS BUILT



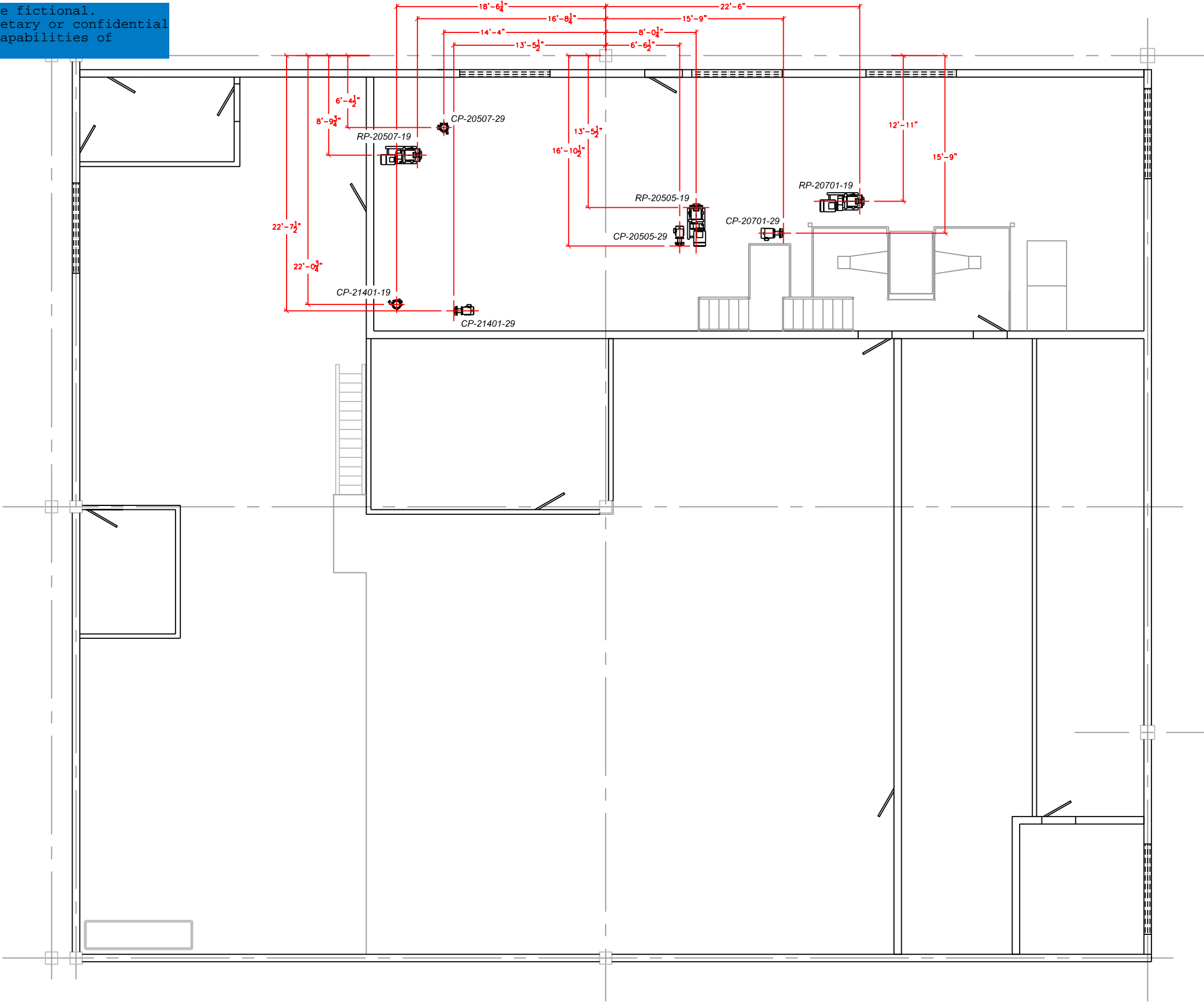
ABC FOODS		
SPRINGFIELD, MO		
WHITE SAUCE KITCHEN		
2SEP2011	STASSEL	11x17

INGREDIENT SLURRY AREA PUMP AND PHE LAYOUT	
DRAWING NUMBER	REV
LAY-200-18	



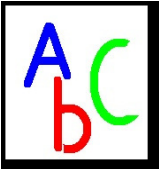
ABC Foods and project ACORN are fictional.
These documents are not proprietary or confidential
and are released to show the capabilities of
Cook Process Solutions LLC.

PLANT NORTH



DIMENSIONS FROM INLET
PORT OF PUMPS

	<div>△ E</div>			<input checked="" type="checkbox"/> RELEASED FOR REVIEW
	<div>△ D</div>			<input type="checkbox"/> FOR CONSTRUCTION BY:
	<div>△ C</div>			
	<div>△ B</div>			
	<div>△ A</div>			
DATE	#	REVISION	BY	<input type="checkbox"/> AS BUILT

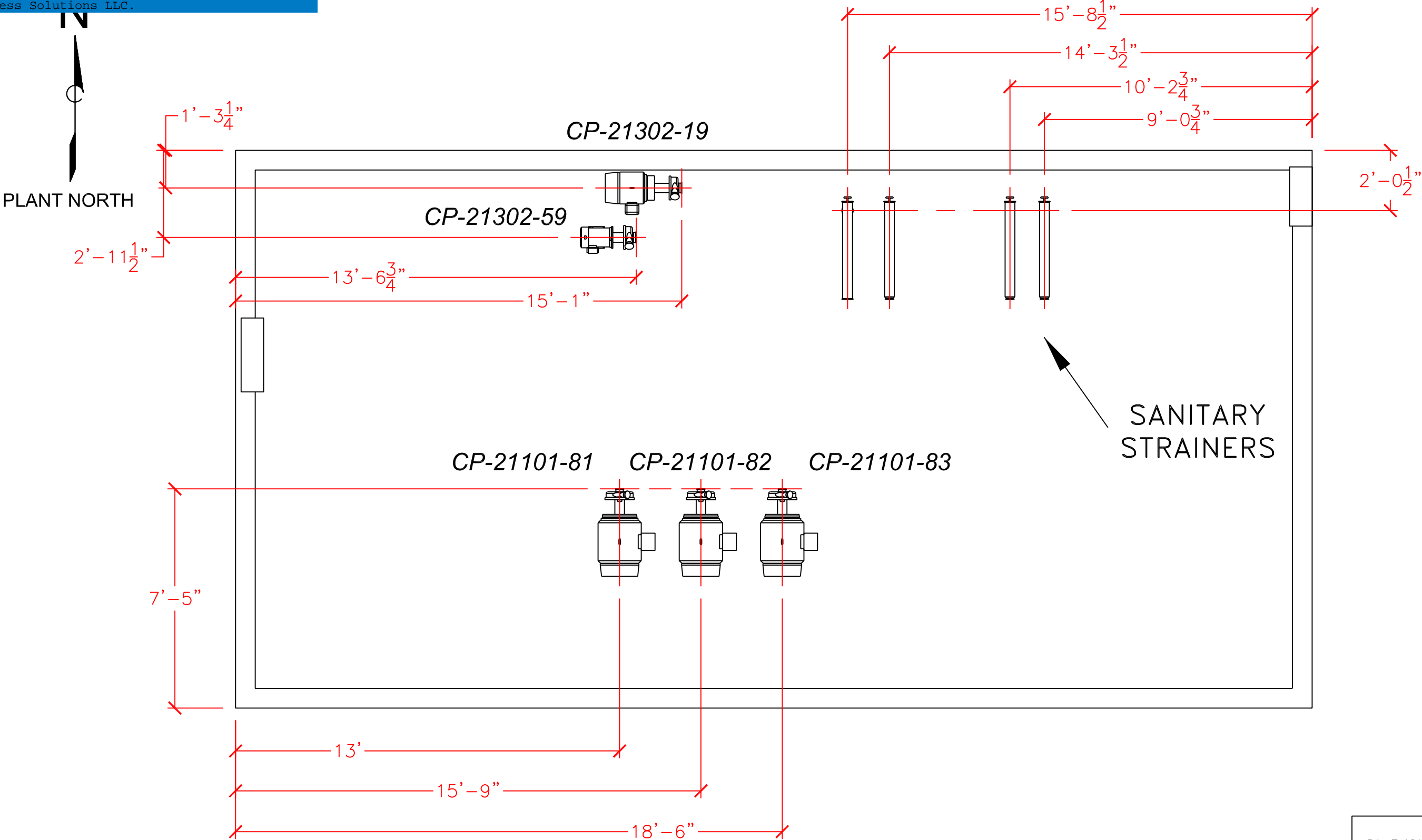


ABC FOODS		
SPRINGFIELD, MO		
WHITE SAUCE KITCHEN		
2SEP2011	STASSEL	11x17

MINOR INGREDIENT AREA PUMP LAYOUT	
DRAWING NUMBER	REV
LAY-200-19	

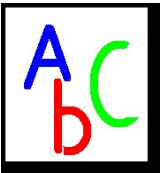


ABC Foods and project ACORN are fictional.
These documents are not proprietary or confidential
and are released to show the capabilities of
Cook Process Solutions LLC.



DIMENSIONS FROM INLET
PORT OF PUMPS

	<div>△ E</div>			<input checked="" type="checkbox"/> RELEASED FOR REVIEW
	<div>△ D</div>			<input type="checkbox"/> FOR CONSTRUCTION BY:
	<div>△ C</div>			
	<div>△ B</div>			
	<div>△ A</div>			
DATE	#	REVISION	BY	<input type="checkbox"/> AS BUILT



ABC FOODS		
SPRINGFIELD, MO		
WHITE SAUCE KITCHEN		
2SEP2011	STASSEL	11x17

CIP AREA PUMP AND FILTERS LAYOUT	
DRAWING NUMBER	REV
LAY-200-20	

